

# MONTHLY MEMBERSHIP PROGRESS REPORT

LOCATION NEBRASKA

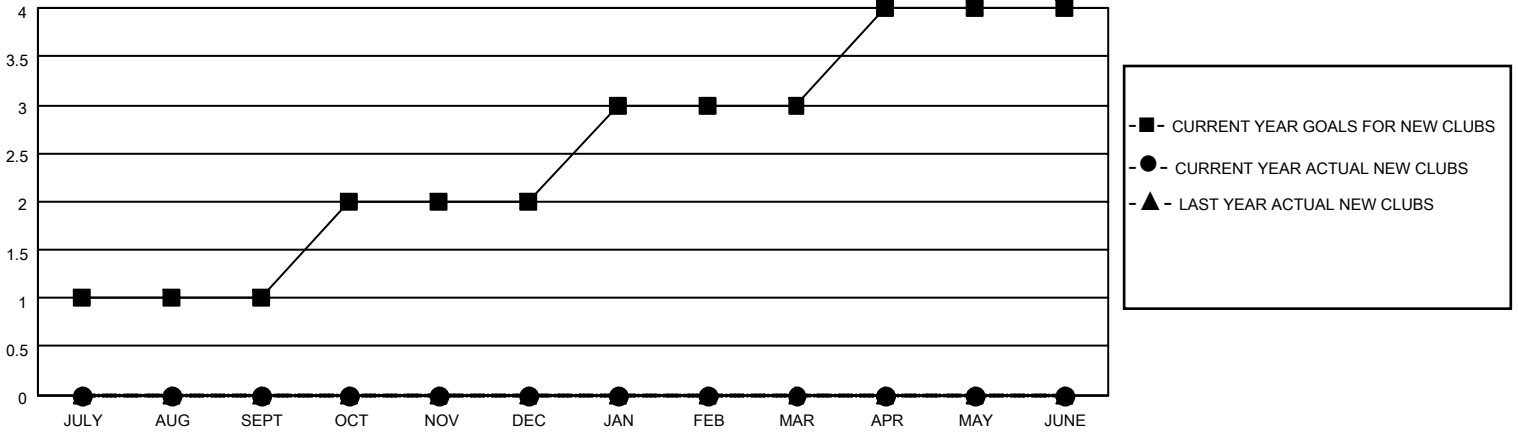
District 38 N

Results as of: 6/30/2021

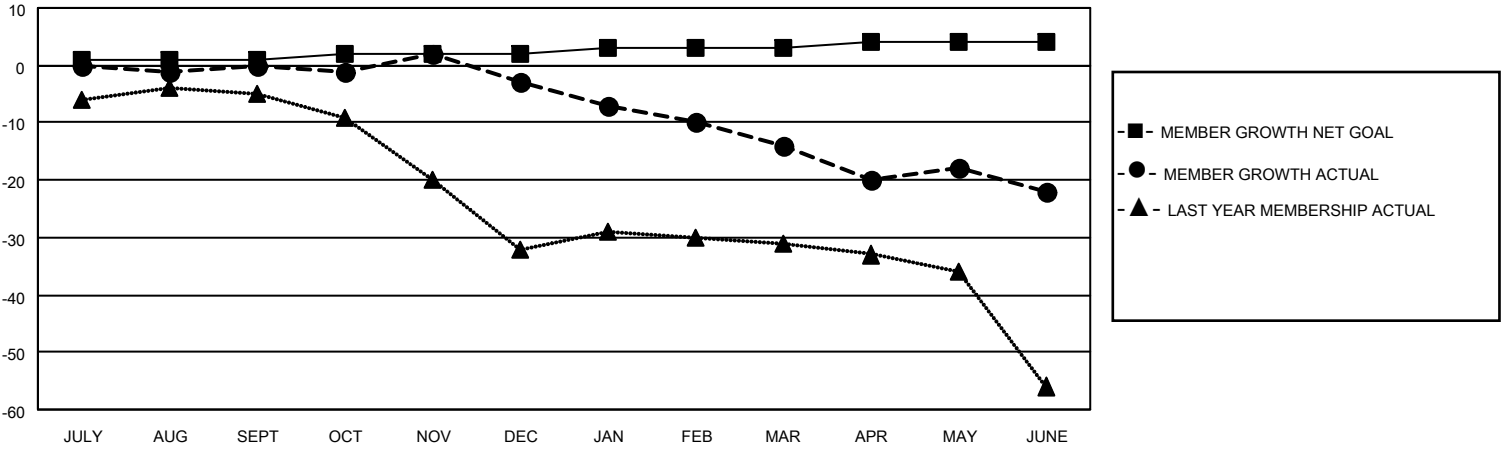
Clubs			
RESULTS FOR 2020-2021			
QUARTER	NEW CLUB GOAL	NEW CLUBS	DROPPED CLUBS
JULY/AUG/SEPT	1	0	0
OCT/NOV/DEC	1	0	0
JAN/FEB/MAR	1	0	1
APR/MAY/JUNE	1	0	0

Members			
RESULTS FOR 2020-2021			
QUARTER	MEMBER GROWTH NET GOAL	MEMBER GROWTH ACTUAL	DROPPED MEMBERS ACTUAL (including transfers)
JULY/AUG/SEPT	1	7	6
OCT/NOV/DEC	1	14	14
JAN/FEB/MAR	1	3	14
APR/MAY/JUNE	1	12	18

**GOALS AND ACTUAL NEW CLUBS CUMULATIVE**



**GOALS AND ACTUAL MEMBERS CUMULATIVE**



DROPPED CLUBS: 1	14 CLUBS OF 29 ADDED 1 OR MORE NEW MEMBERS	<u>GENDER DISTRIBUTION</u> MALE 495 (70.92%) FEMALE 203 (29.08%)
<u>DROPPED MEMBERS</u> DECEASED 13 CLUB CANCELLED 3 OTHER 36 <hr/> TOTAL 52	<a href="#">CLICK HERE FOR CUMULATIVE MEMBERSHIP DATA</a>	TOTAL FAMILY UNIT MEMBERS 121 FAMILY MEMBERS PAYING HALF DUES 61